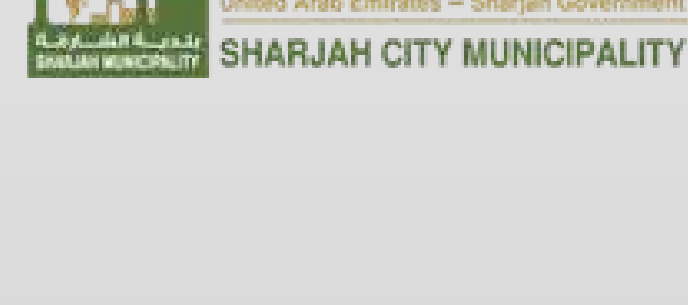


Sharjah Municipality Internal Portal

For Employees



Project Brief

SM required a web platform for an existing portal, which would allow employees to manage their informaion and apply services.

Project Goal

Goal was to design a platform where every type of employee can get easy access and apply services and get benefits. The product needs to be user friendly.

Problem Statement

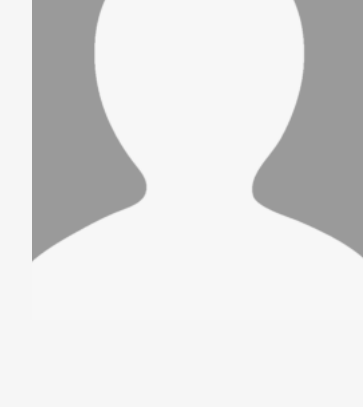
The existing portal had limited features and the portal required new features to be added so all type of employee can access the portal.

Design Process



Target Persona

To start with, i created a persona based on the userbase that mostly used the existing portal. It was evident that the primary persona for this product would be local employees who needed a web platform to manage their services.



Mohamed Hassan

AGE: 32
Occupation: Programmer
Location: Sharjah
"I have a busy life, Balancing career with family commitments"

Mohamed Hassan is senior programmer in Sharjah Municipality. He always faced issue while applying annual leaves and have no record of his leaves. He also need a platform where he can apply his benefits which includes " Air Tickets, School fees, Medical Insurance, Salary certificate ETC.

Needs & Goals

- Manage/Maintain Annual and Sick leaves
- Applying Benefits under one platform
- Check and balance on his performance points



Halema Bin Jumah

AGE: 28
Occupation: Design Director
Location: Sharjah
"I have a busy life, Balancing career with family commitments"

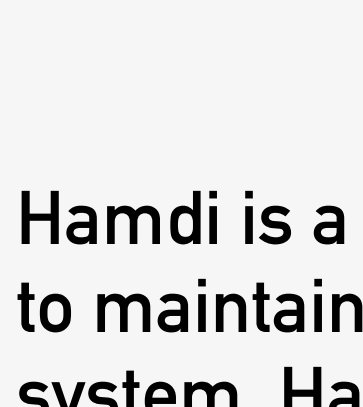
Halema is a Designer Director in Sharjah Municipality. She is so ambiguous about her annual performance. She wants a platform where she can manager her and her teams points. She can input her team performance. Basically she wants a Employee performance system.

Needs & Goals

- She is facing difficulties maintaining performance system for her team.
- She wants a system where she can showcase performance. points.

Painpoints

- Point system can help annual performance
- Employee's annual appraisal will be easy



Hamdi Abdullah

AGE:41
Occupation: labour Incharge
Location: Sharjah

Hamdi is a team lead of Labour workers and manage their workd and problems. He was unable to maintain his team record as the labour workers cant use computer or didn't have access to the system. Hamdi need to handle all their issue and problem.

Needs & Goals

- Manage Labour's Work
- One window solution
- Easy access to intranet

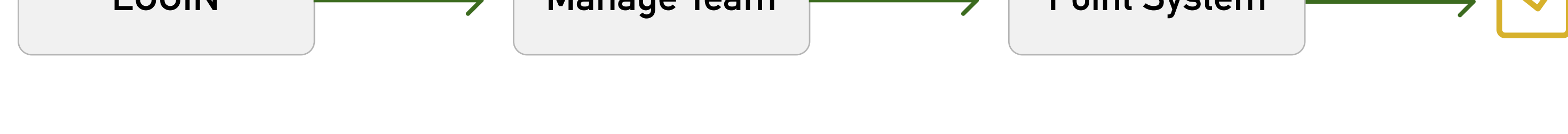
Painpoints

- Annual/Sick Leaves
- Labour appraisal system

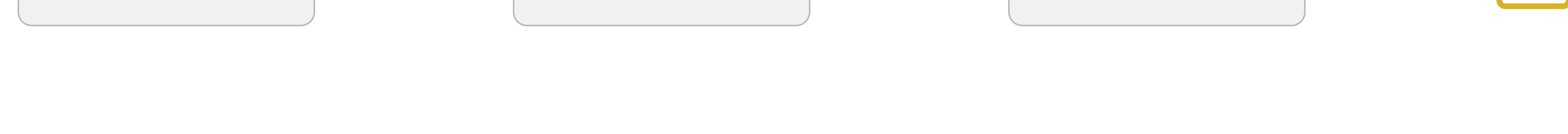
Task Analysis

From the analysis and research done one the existing product and user base, it was clear that the following would be the most common goals that users would try to achieve

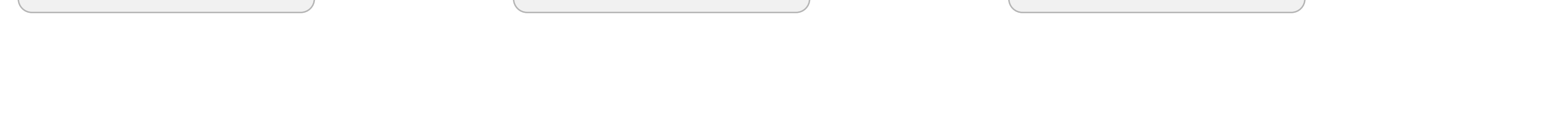
Task 1 Accessing complete point system for the team.



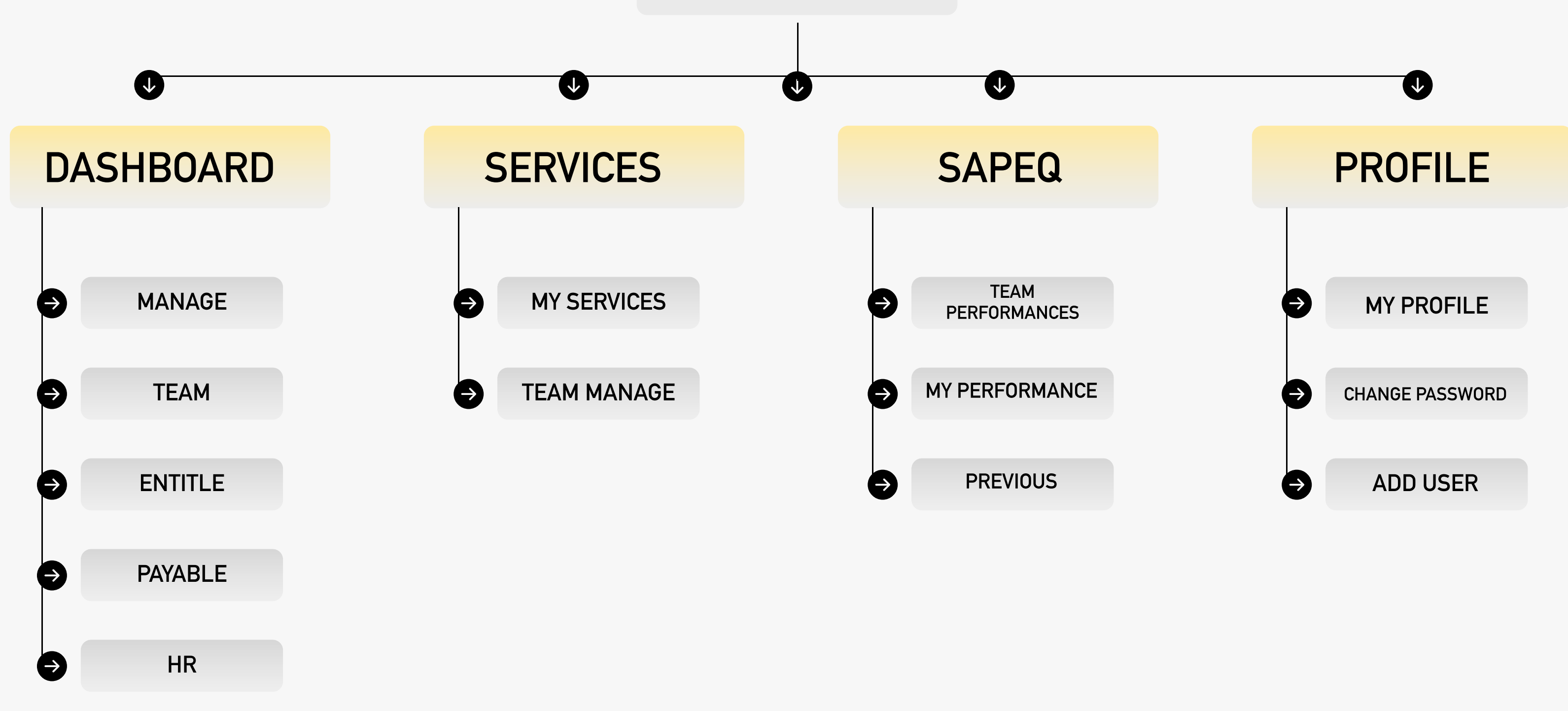
Task 2 Manage Annual leaves and easy steps to apply benefits



Task 3 Manage users and their benefits

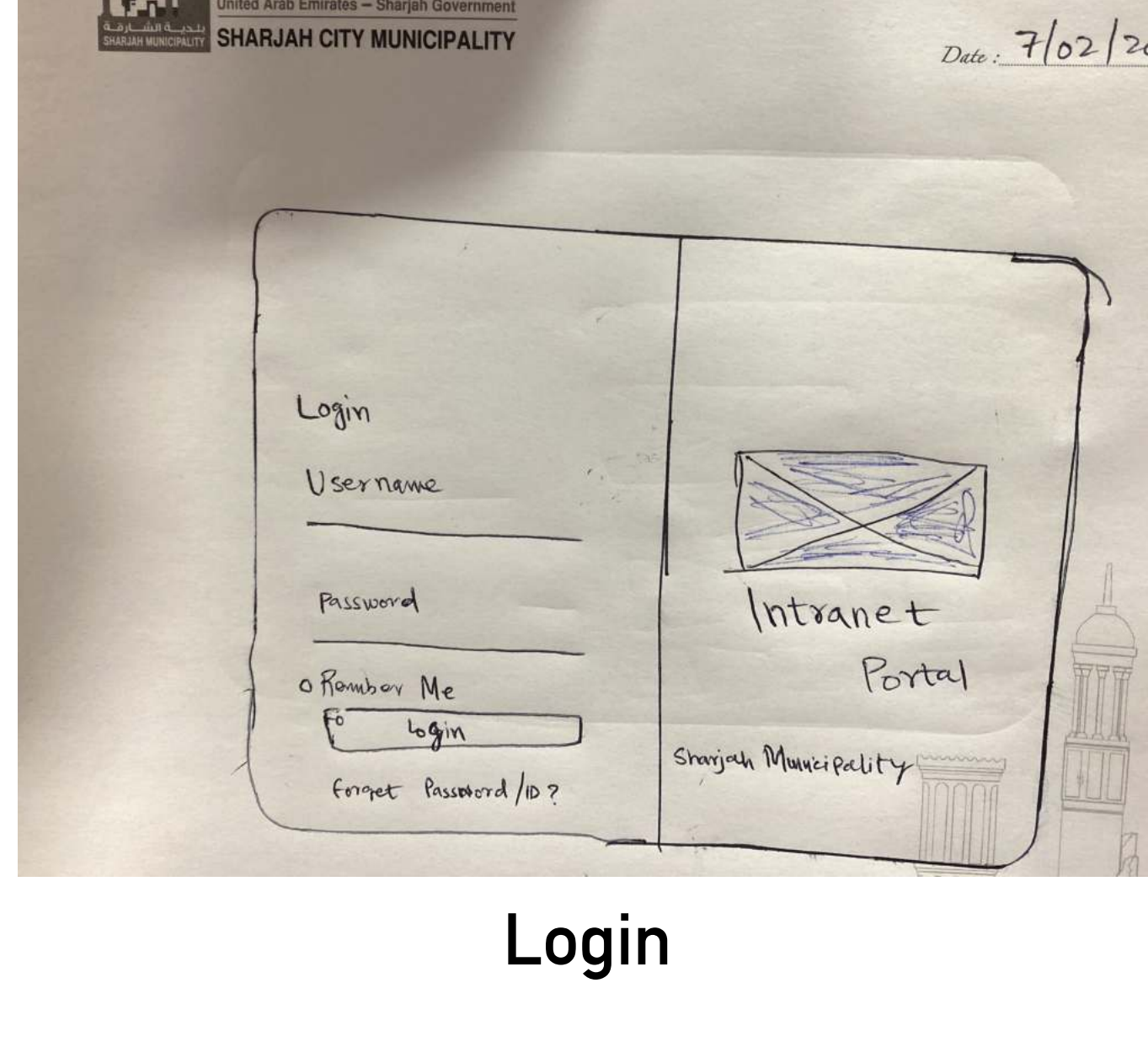


Information Architecture

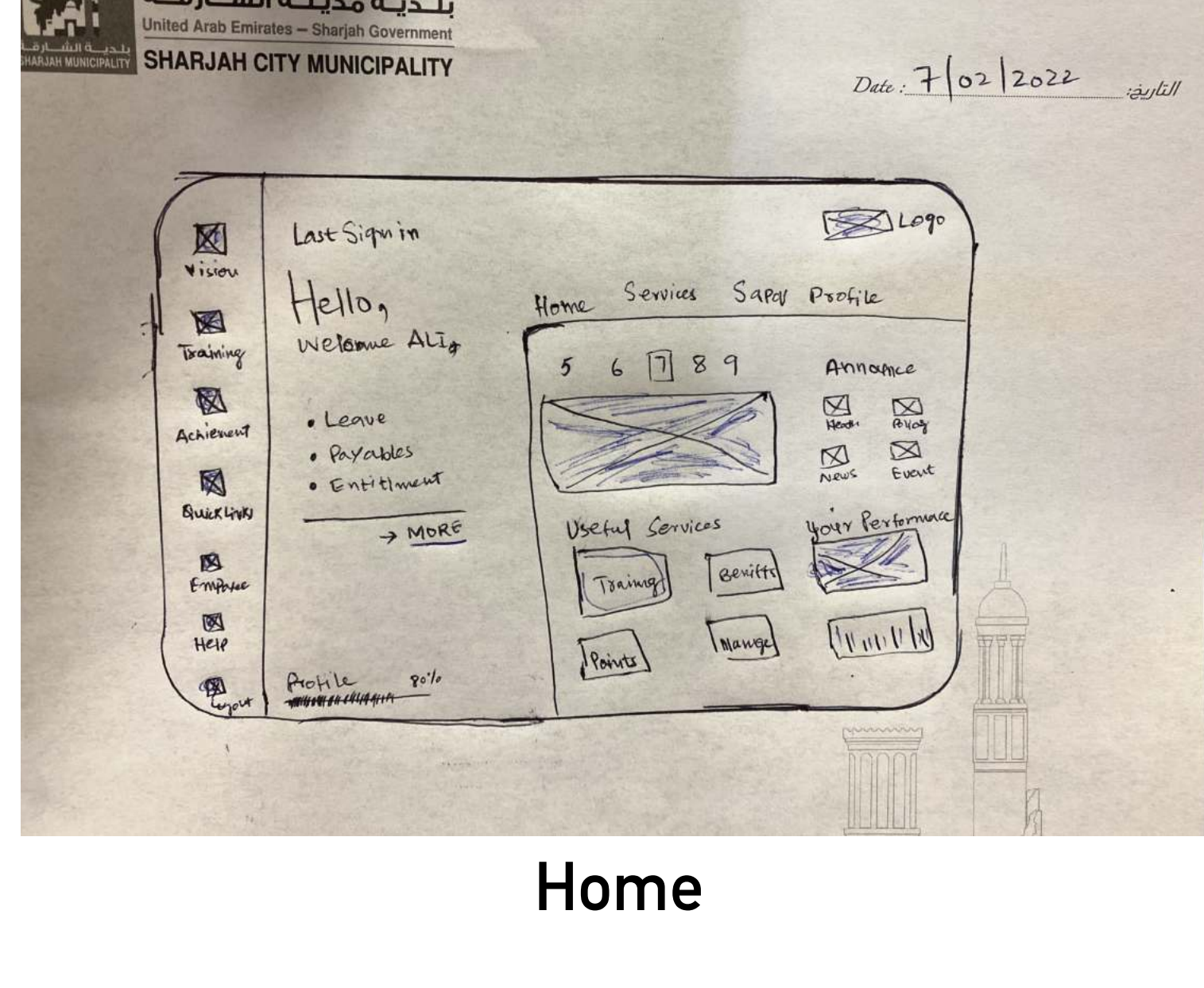


Initial sketches and wireframe

Once the flow was ready, initial sketches were made taking inspiration from existing product, incorporating business and user requirements.



Login



Home

High Fidelity Wireframes

The creation of final high-fidelity wireframes as visual guide that represents the structure, hierarchy and key elements



راheel شيخ
Raheel Sheikh
UX Designer